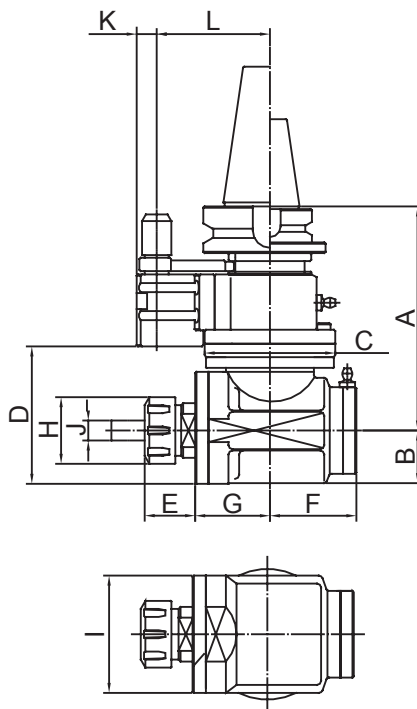


## 90° Angle Head

## AHA Type

- The body is made of FCD60~65. High strength steel; stable machining.
- Wide selections of tool shanks. The design of ER32, ER40, and FA25.4 heads can be applied to various applications.
- Can be automatic tool changed. Increases productivity.
- Suitable for light and middle cutting.

<b>Concentricity</b>	: 0.002 mm
<b>Squareness</b>	: 10 Arc Second
<b>Material</b>	: FCD60 ~ FCD65
<b>R.P.M.</b>	: Max. 4000 RPM
<b>Gear Ratio</b>	: 1 : 0.81
<b>Spindle Type</b>	: BT, NT(ISO), SK, CAT, HSK
<b>Standard Accessory</b>	: Hook Spanner ER Wrench, ER Nut



Model	A	B	C	D	E	F	G	H	I	J	K	L	N.W. (KG)
AHA-BT30-ER32	168	39.5	98	103	38	65	56	50	88	3~20	15	65/80/85	7.2
AHA-BT40-ER32	168	39.5	98	103	38	65	56	50	88	3~20	15	65/80/85	7.8
AHA-BT50-ER32	171	39.5	98	103	38	65	56	50	88	3~20	15	80/85/110	9.5
AHA-BT30-ER40	168	39.5	98	103	39	65	56	63	88	4~26	15	65/80/85	7.8
AHA-BT40-ER40	168	39.5	98	103	39	65	56	63	88	4~26	15	65/80/85	7.8
AHA-BT50-ER40	171	39.5	98	103	39	65	56	63	88	4~26	15	80/85/110	9.5
AHA-NT50-ER32	171	39.5	98	103	38	65	56	50	88	3~20	15	80/85/110	7.8
AHA-NT50-ER40	171	39.5	98	103	39	65	56	63	88	4~26	15	80/85/110	9.5
AHA-SK40-ER32	168	39.5	98	103	38	65	56	50	88	3~20	15	65/80/85	7.8
AHA-SK50-ER32	171	39.5	98	103	38	65	56	50	88	3~20	15	80/85/110	9.5
AHA-SK40-ER40	168	39.5	98	103	39	65	56	63	88	4~26	15	65/80/85	7.8
AHA-SK50-ER40	171	39.5	98	103	39	65	56	63	88	4~26	15	80/85/110	9.5
AHA-CAT40-ER32	168	39.5	98	103	38	65	56	50	88	3~20	15	65/80/85	7.8
AHA-CAT50-ER32	171	39.5	98	103	38	65	56	50	88	3~20	15	80/85/110	9.5
AHA-CAT40-ER40	168	39.5	98	103	39	65	56	63	88	4~26	15	65/80/85	7.8
AHA-CAT50-ER40	171	39.5	98	103	39	65	56	63	88	4~26	15	80/85/110	9.5
AHA-HSK63-ER32	175	39.5	98	103	38	65	56	50	88	3~20	15	65/80/85	7.8
AHA-HSK100-ER32	178	39.5	98	103	38	65	56	50	88	3~20	15	80/85/110	7.8
AHA-HSK63-ER40	175	39.5	98	103	39	65	56	63	88	4~26	15	65/80/85	9.5
AHA-HSK100-ER40	178	39.5	98	103	39	65	56	63	88	4~26	15	80/85/110	9.5

Unit : mm